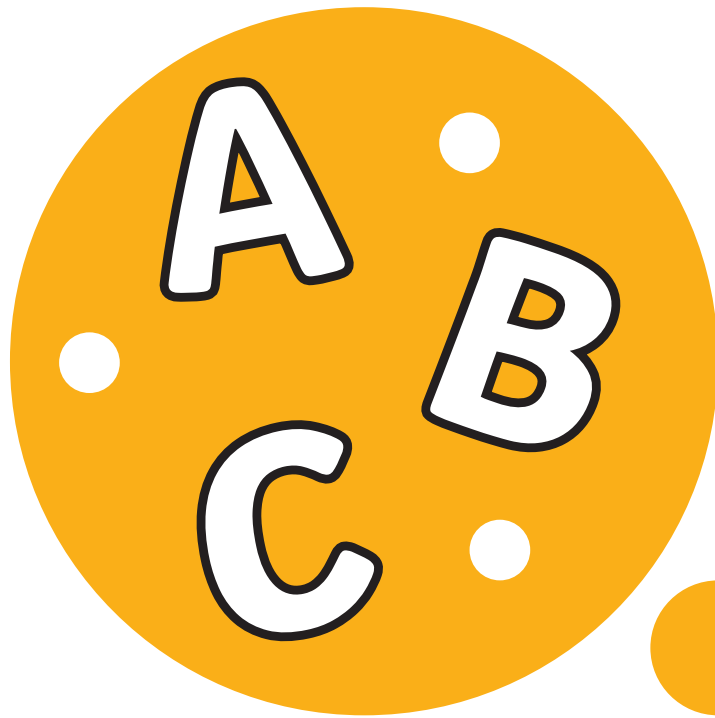
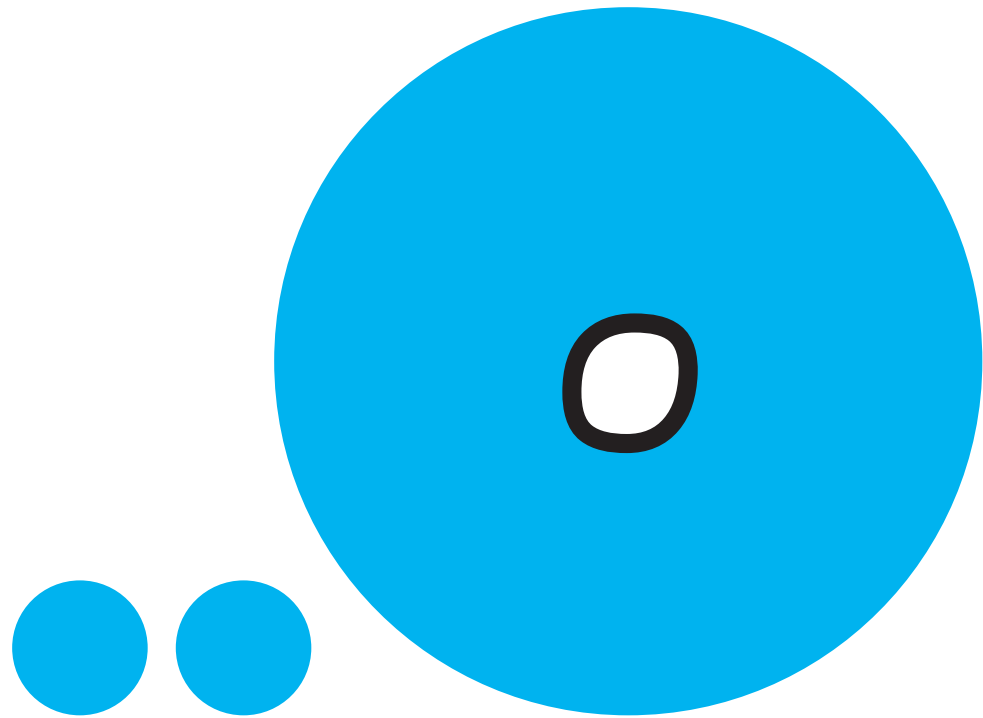
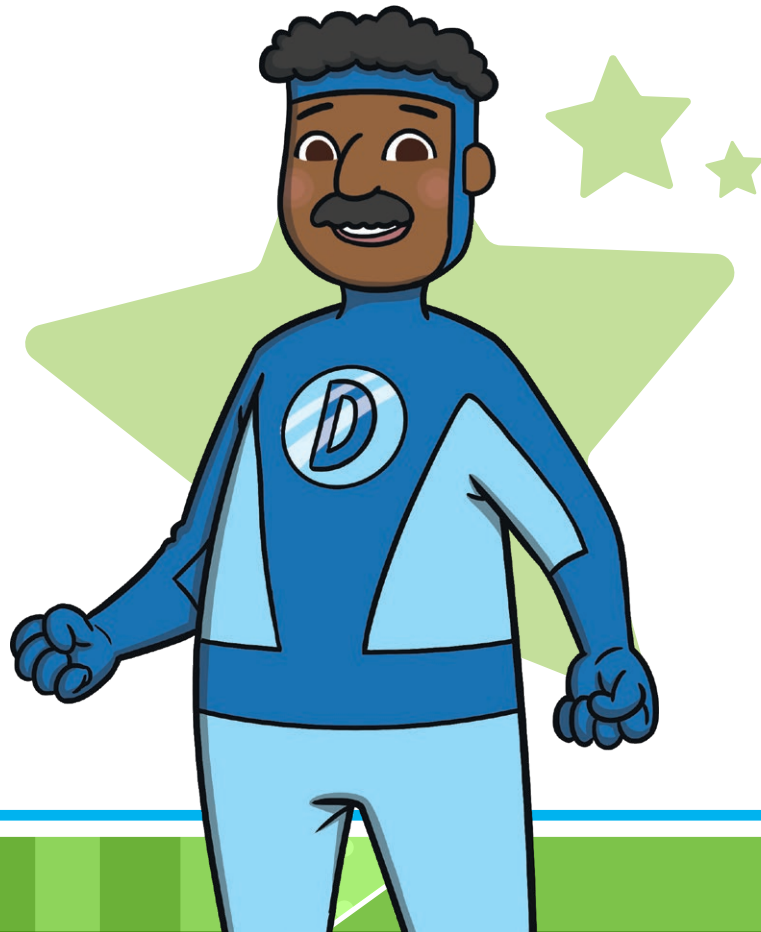


**Every sentence should start
with a capital letter.**



Every sentence should end
with a **full stop**.



Make sure that you put a **finger space** between each word.

The superhero saved the day.



Check that you have written
your letters the **right way** round.

H910



Hero

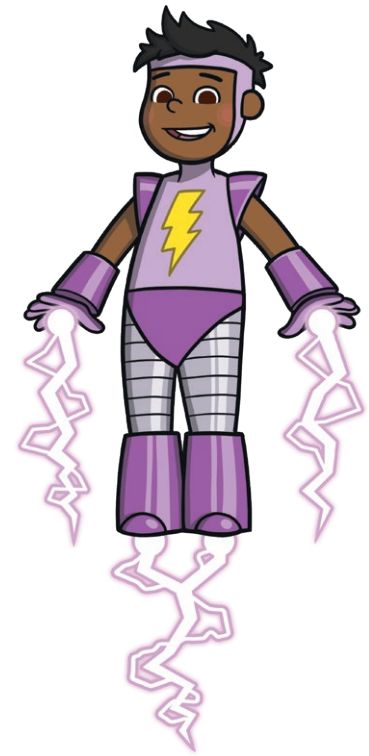


Your letters should all
be the **same size.**



superhero

superhero



Try to use lots of **conjunctions**
in your sentences.

since
yet
because
when
while
but
although
and
since



Try to use lots of **awesome**
adjectives in your sentences.



unusual
rapid
bright
eager
little
big
frightened
brave
swift

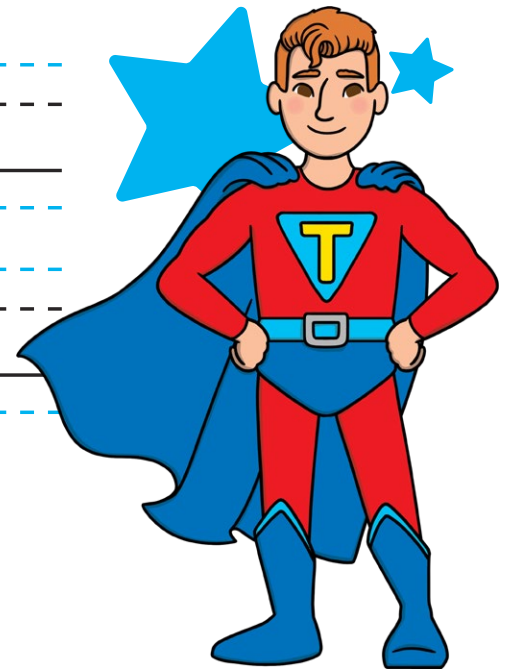
Read your sentence to yourself.
Does it **make sense**?



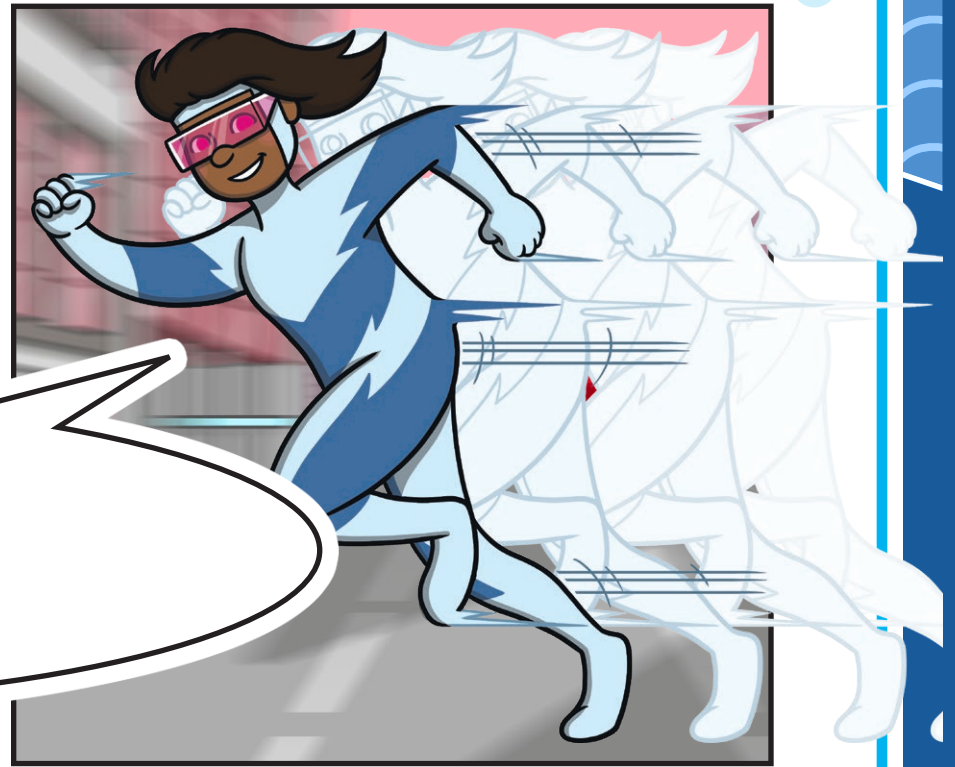
Make sure that your
letters **sit on the line.**



The superheroes
arrived on time.



Make sure that your letters with tails descend **under the line.**



Quickly!

Make sure that your tall letters
ascend **above the smaller letters.**



Let's do our best!



Remember to end any exclamations
with an **exclamation mark!**



Have you used a **question mark** at the end of all of your questions?

